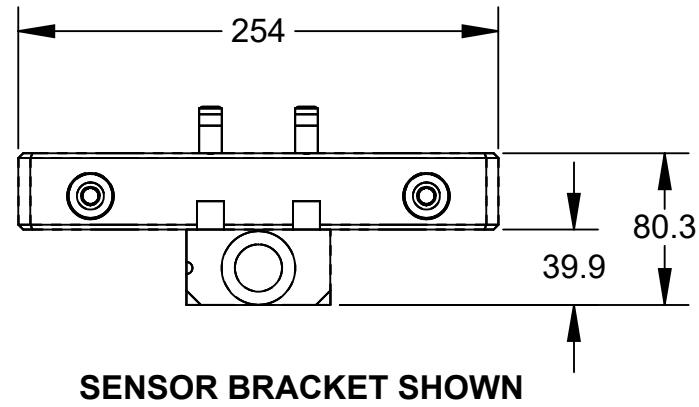
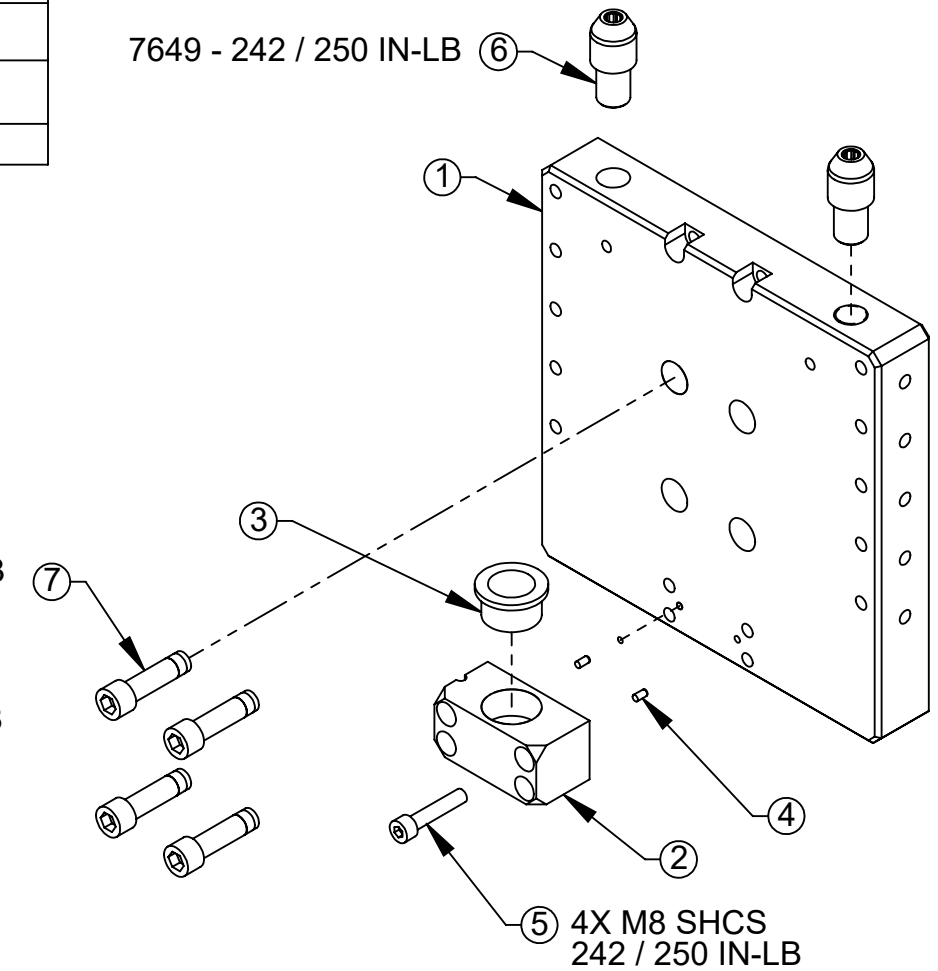
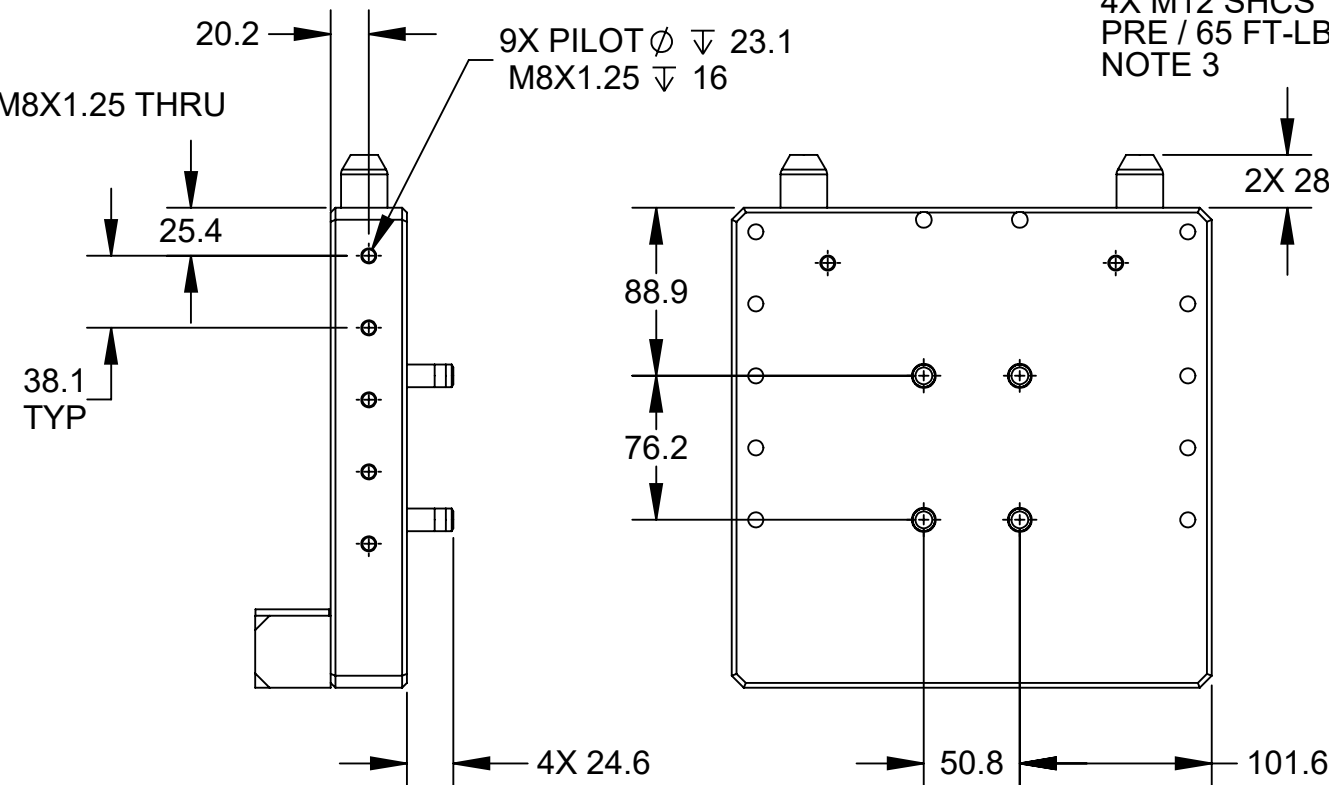
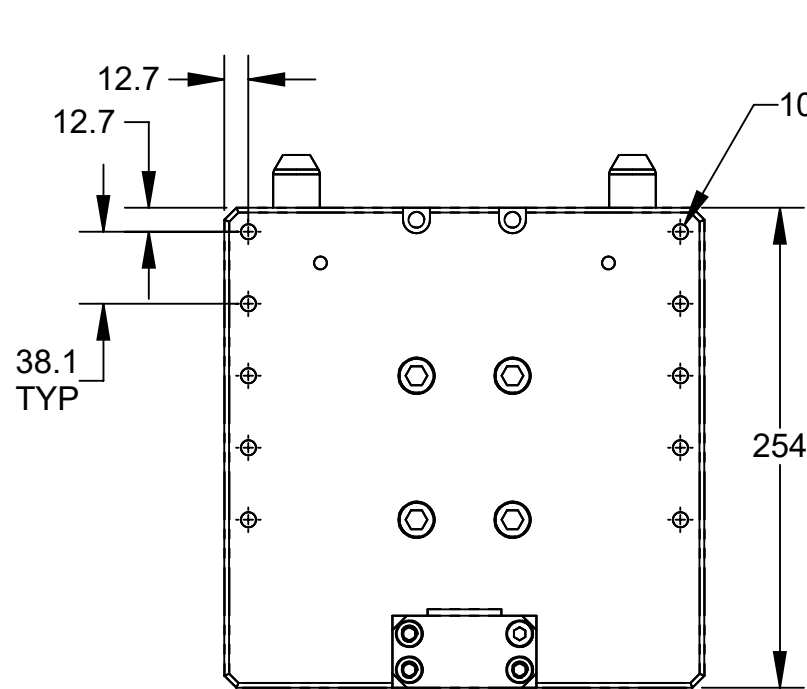


REV.	DESCRIPTION	INITIATOR	DATE
05	ECO 20040; CHANGED DIMS TO ONE PLACE DECIMAL. CONVERTED TEXT TO ALL CAPS.	LJH	8/2/21



Serviceable Items			
ITEM NO.	QTY.	PART NUMBER	DESCRIPTION
3	1	3710-20-1028	LARGE TOOL STAND BRONZE BUSHING
6	2	3700-20-3323	QC TOOL STAND ALIGNMENT PIN

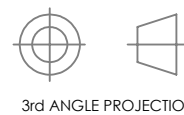


ITEM NO.	QTY.	PART NUMBER	DESCRIPTION
1	1	9120-TSL-RMB-R000	TSL PIN & BUSHING MODULE, RIGID

- NOTES:**
- ASSEMBLY WEIGHT: 17 LB
  - SERVICEABLE COMPONENT MATERIALS: HARDENED STAINLESS STEEL ALIGNMENT PINS AND BRONZE BUSHING.
  - IF PRE-APPLIED SCREW IS INSTALLED MORE THAN ONCE, APPLY LOCTITE 242.

NOTES: UNLESS OTHERWISE SPECIFIED.

DO NOT SCALE DRAWING. ALL DIMENSIONS ARE IN MILLIMETERS.



1031 Goodworth Drive, Apex, NC 27539, USA  
 Tel: +1.919.772.0115 www.ati-ia.com  
 Fax: +1.919.772.8259 ISO 9001 Registered Company

PROPERTY OF ATI INDUSTRIAL AUTOMATION, INC. NOT TO BE REPRODUCED IN ANY MANNER EXCEPT ON ORDER OR WITH PRIOR WRITTEN AUTHORIZATION OF ATI.

DRAWN BY: E. Donkor 12/19/2013		TITLE	
CHECKED BY: J. Winterroth, 1/10/14		TSL Pin & Bushing Module, Rigid	
PROJECT # -	SHEET 1 OF 1	SCALE	SIZE
		1:4	B
DRAWING NUMBER		REVISION	
9630-20-TSL-RMB-R000		05	